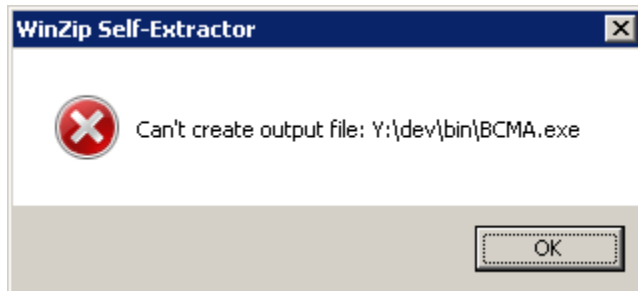


If you receive the following error, or similar, when running a CareVue executable, you may need to restart Samba (Note\*\* This is typically caused because a PC is running BCMA directly from the repository instead of locally. That should be corrected.)



**Command to Restart Samba:**

```
[llamb@ov-07 ~]$ sudo service smb restart
```

```
[sudo] password for llamb:
```

```
Shutting down SMB services:          [ OK ]
```

```
Shutting down NMB services:         [ OK ]
```

```
Starting SMB services:               [ OK ]
```

```
Starting NMB services:              [ OK ]
```

**Try running the CareVue executable again after Samba is restarted.**